

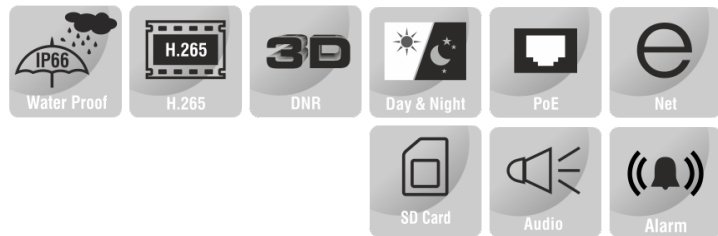
4MP FIXED DOME CAMERA



ENC-HCD7F-00R-67

FEATURES

4 mm Fixed Lens
Warm Light Illumination up to 20m
ONVIF Profile (S, G, T)
Triple Stream
Audio and Alarm Support
PoE, IP66



SPECIFICATION

MODEL	Model No.	ENC-HCD7F-00R-67
CAMERA	Type	4MP FIXED DOME CAMERA
	Image Sensor	1/1.8" CMOS Progressive 4.0 MegaPixel
	Day/Night	IR Cut Filter with Auto Switch
	Lens Type	Fixed
	Focal Length	4 mm
	Focus	Fixed
	Iris	Fixed Iris
	Angle of View (H)	88.7°
	Angle of View (V)	48.2°
	Angle of View (D)	100.9°
	Angle Adjustment	Pan 0~360°, Tilt 0~90°, Rotate 0~360°
	Shutter	1s to 1/100,000s, Auto / Manual
	Min. Illumination	Color: 0.0005 lux @ F1.0, B/W: 0 lux with IR
	AGC	Auto / Manual
	Digital Noise Reduction	3D DNR
	S/N Ratio	≥55 dB
	Defog	Smart Defog
WDR	120 dB	
Warm Light Distance	20 m	
Wavelength	850 nm	

4MP FIXED DOME CAMERA



ENC-HCD7F-00R-67

MODEL	Model No.	ENC-HCD7F-00R-67
	Type	4MP FIXED DOME CAMERA
VIDEO	Max. Resolution	2560x1440
	Video Compression	H.265+, H.265, H.264, MJPEG
	Frame Rate	Main Stream: (2560x1440, 2304x1296, 1920x1080, 1280x720) @ 25/30fps Sub Stream: (D1, VGA, CIF) @ 25/30fps Third Stream: (VGA, CIF, QVGA) @ 25/30fps Fourth Stream : Customizable
	Stream Settings	i-Frame, PAL/NTSC, Frame Rate, EIS
	Video Bit Rate	100 kbps ~ 12 Mbps
	Bitrate Type	CBR, VBR
	Image Settings	Brightness, Contrast, Saturation, Sharpness, Day/Night, Mirror/Flip
	White Balance	Auto, Day/Night, Tungsten, Manual
	HLC	Supported
	BLC	Supported
	OSD	Supported
	OSD Type	Title, Week, Date, Time, Text with different colors and adaptable sizes, Image overlay
	ROI	Up to 8 regions
Privacy Mask	Supported	
AUDIO	Audio Compression	G.711A, G.711U, RAW_PCM
	Audio Bit Rate	8 kbps, 16 kbps, 64 kbps
	Audio I/O	1/1
	Built-in Mic	Supported
SMART	Behavior Detection	Intrusion (Perimeter), Crossline (Tripwire), Double Crossline (Double Tripwire)
	Intelligent Identification	Loitering
	Statistical Analysis	Face Detection , People Counting, Human & Vehicle Detection, Wrong Way Detection
	Alarm Management	Motion Detection, Tampering (Masking), Input & Output Event, Network Alarm, Disk Alarm, Day Night Switch Alarm, Pre/Post Alarm Recording, Alarm Recording/Snapshot
INTERFACE	Protocols	TCP/IP, UDP, IPv4, IPv6, ICMP, HTTP, HTTPS, FTP, DHCP, DNS, DDNS, RTP/RTSP/RTCP, PPPoE, NTP, UPnP, SMTP, IGMP, 802.1X, QoS, Unicast, Multicast, ARP, SNMP, SSL/TLS 1.2
	Security	TLS Video Encryption, IP Filter, User Authentication (Multiple Privilege Level), 802.1X Authentication (EAP-MD5), HTTPS Authentication, RTSP Authentication, Digest Authentication, User Access Log
	Compatibility	ONVIF Profile (S, G, T), SDK/CGI
	Network	1 x RJ45 10M/100M Self Adaptive Ethernet Port
	Alarm Interface	1 Input / 1 Output
	Edge Storage	SD card slot, up to 256 GB
	ANR	Supported
	Max User Access	32
GENERAL	Client Application	EyeGuard
	Power Supply	12V DC/ PoE (IEEE 802.3af)
	Max. Power Consumption	7.5 W
	Working Temperature	-40 °C ~ 60 °C
	Working Humidity	≥90% RH (non-condensing)
	Ingress Protection	IP66
	Surge Protection	TVS4000V
	Reset Button	Supported
	Dimensions	φ118x94 mm
Net Weight	0.55 Kg	

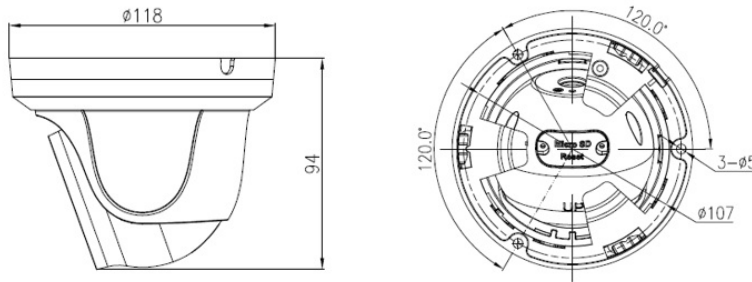
4MP FIXED DOME CAMERA



ENC-HCD7F-00R-67

MODEL	Model No.	ENC-HCD7F-00R-67
	Type	4MP FIXED DOME CAMERA

Dimension Unit : mm



ORDERING INFORMATION

Part Number	Description	Standard Quantity
ENC-HCD7F-00R-67	4MP H.265 Full Color Compact Dome Camera with 4mm Lens, WDR, PoE, SD Card Slot , Built-in Mic, Smart Analytics and 20m Illumination Distance Support	1
ENB-BCDJ64	Junction Box for Eyenor Dome Camera	1
ENB-BCDQ64	Pendant Cap for Eyenor Dome Camera	1
ENB-BCDP66	Pendant Mount for Eyenor Dome Camera	1
ENB-BCDW66	Wall Mount for Eyenor Dome Camera	1
ENB-BCDV66	Pole Mount for Eyenor Dome Camera	1
ENB-BCDH66	Corner Mount for Eyenor Dome Camera	1

PACKING INFORMATION

Part Number	Packing Mode	Gross weight(Kg)	Dimension(mm)
ENC-HCD7F-00R-67	Carton Box	-	-