

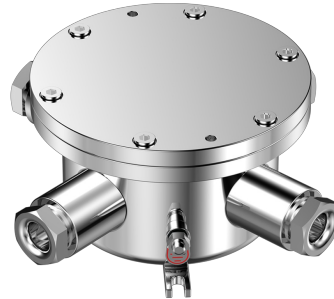
# JUNCTION BOX FOR EXPLOSION PROOF CAMERA



## ENB-BZAJ68

### FEATURES

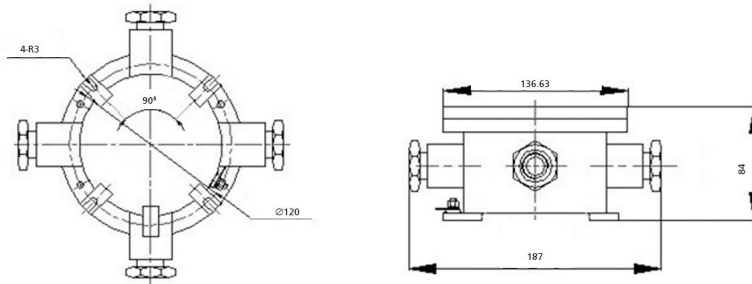
304/316L Stainless Steel Construction  
 Junction Box for Explosion Proof Camera  
 IP68



### SPECIFICATION

MODEL	Model No.	ENB-BZAJ68
	Type	JUNCTION BOX FOR EXPLOSION PROOF CAMERA
GENERAL	Construction	304/316L Stainless Steel
	Cable Thread Hole	4pcs: G3/4 or NPT3/4
	Ingress Protection	IP68
	Working Temperature	-40 ~ 60 °C
	Working Humidity	≤95% RH (non-condensing)
	Atmospheric pressure	80 kPa ~ 106 kPa
	Surge Protection	Supported (Optional)
	Fit Zone	Gas Zone 1, 2 (IIA, IIB, IIC, T1-T6) Dust zone 21, 22
	Overall Dimensions	φ 187x84 mm
	Inner Dimensions	φ 100x75 mm
Weight	3.5 kg	

Dimension Unit : mm



### ORDERING INFORMATION

Part Number	Description	Standard Quantity
ENB-BZAJ68	Junction Box for Norden Explosion Proof Camera	1

★Product specification and availability are subject to change without notice.

# JUNCTION BOX FOR EXPLOSION PROOF CAMERA



**ENB-BZAJ68**

## PACKING INFORMATION

Part Number	Packing Mode	Gross weight(Kg)	Dimension(mm)
ENB-BZAJ68	Carton Box	-	-