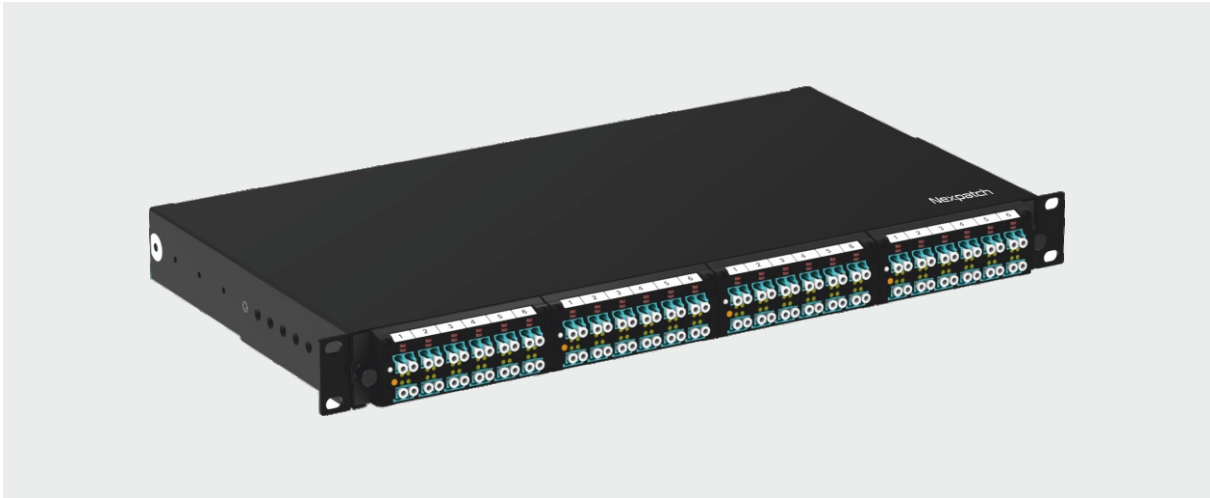


Nexpatch F/O Cassette Tray



Norden Nexpatch Cassette Tray is used for real-time physical network monitoring and management. They are designed to support rapid and easy deployment of inter-connect, cross-connect and fiber-channel applications such as data centers, telecommunication rooms, storage area networks, horizontal, backbone and entrance facilities.

COMPLIANCE

- One Nexpatch Cassette Tray can accommodate up to 4 Nexpatch Cassettes (96 fibers per 1RU)
- Accepts LC-MTP and LC-LC adapters cassettes
- Compatible with Nexpatch hardware including Nexpatch Collector, Scanning cards and Nexpatch F/O Cassette
- Two rear RJ45 ports for connections to the Nexpatch Collector ports
- High-density 1RU
- 19" Rack Cassettes Tray
- Multi positioning side brackets
- Pull Out sliding tray for easy maintenance
- Hot-Swap plug and play cassettes

SPECIFICATIONS & ACCESSORIES

Number of fibers	24 Fibers Per Cassette (96 Fibers per 1RU Tray)
Connectivity to Nexpatch collector	2 Rear RJ45 Jacks
Tray material	Steel, 1.5 mm thick
Tray color	Electrostatic Epoxy paint, Black
Tray form factor	19" Rack mountable, 1RU
Flammability rate	Flame Retardant, UL 94-V0
Operating temperature	-20°to +60°C
Storage temperature	-25°to +70°C
Tray dimensions (HxWxD)	1.75" x 19"x 9.5"
Tray weight	3.4 Kg

Nexpatch F/O Cassette Tray

ORDERING INFORMATION

Part Number	Description
NXF14SL096X	96 Fibre Nexpath Fibre Tray
NXF00SL0BLX	Nexpatch Blank Tray Cassette (Set of 3 units)

