

Key Switch

Secnor NAC-9102EB Key Switch has a standard structure made up of Stainless Steel Panel and a Key.

Application

Office areas, schools, communities, office buildings, hotels, shopping malls, shops, public service places, etc.

Features

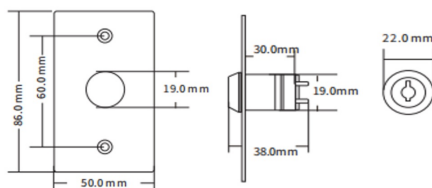
- 2NO/2NC/2COM
- Standard Key: 2 PCS
- 1.8mm thick stainless steel panel
- Optional Backbox of size 86Lx50Wx28H(mm) available



Technical Parameters

Dimensions	86Lx50Wx30H(mm)
Standard Structure	1.8mm thick 304 stainless steel panel
Power Supply	DC 12V
Output Contact	2NO/2NC/2COM
Mechanical Life	500000
Operating Temperature	-20°C~+55°C (-4°F~131°F)
Operating Humidity	0-95% (RH)
Weight	0.15Kg

Dimensions:



Ordering Information

Part Number	Description
NAC-9102EB	Key Switch
NAC-9112BB	Metal Backbox For NAC-9102EB