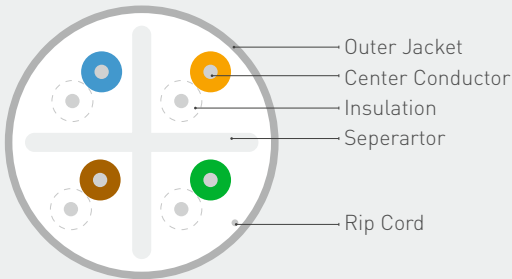
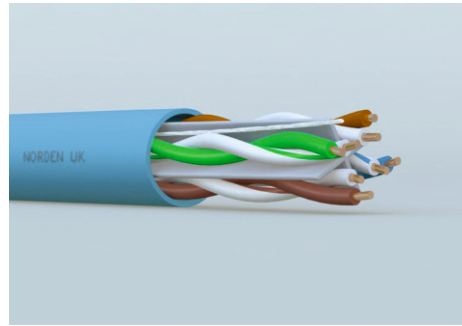


CATEGORY 6 U/UTP 23 AWG 4 PAIR CABLE

Norden Category 6 UTP cables exceed Category 6 / Class E specification. It is tested to 250 MHz frequency range and designed to support Gigabit 1000Base-T and 1000Base-Tx applications up to 100m.

Extremely high pair-balance providing excellent EMC (Electro Magnetic Compatibility), minimizing radiation, maximizing noise immunity and providing high alien cross talk performance to UTP (Unshielded Twisted Pair) cabling systems.



COMPLIANCE

IEEE 802.af, IEEE 802.3at for PoE applications
 ANSI/TIA-568.2-D Category 6
 ISO/IEC-11801, Class E / IEC 61156-5: Category 6.
 LSOH: IEC 60332-1, IEC 60754, IEC 61034

PRODUCT CLASSIFICATION

Product Sequence	E Series
Product Type	Twisted Pair Cable

MATERIAL CONSTRUCTION & DESIGN

Conductor Material	Bare Copper
Conductor Size	23 AWG
Conductor Construction	Solid
Insulation Material	High Density PE
Insulation Diameter	1.02±0.03 mm
Colour Code	Per TIA/EIA 568-B
Total Number of Wires	8
Rip Cord	Yes
Outer Jacket	PVC/LSOH
Outer Jacket Thickness & Ex. Diameter	0.55 ± 0.05 mm , 6.00 ± 0.30 mm

CATEGORY 6 U/UTP 23 AWG 4 PAIR CABLE

ELECTRICAL & MECHANICAL CHARACTERISTICS

Impedance	100 Ω ±15
DC Resistance	73 Ω/km nom.
Max. Resistance Unbalance	4 %
Capacitance	5.6 nF/100m max.
Capacitance Unbalance	3.3 pF/m max.
Propagation Delay Skew	35 ns/100m max.
Velocity of Propagation	69 %
Min. Insulation Resistance	5 GΩ•km
Max. Tensile Strength - Short Term	110 N
Min. Bend Radius	53.6 mm
Operating Temperature Range	-10°C to +65°C

TRANSMISSION PERFORMANCE

Cat. 6 Un-screened Pair Horizontal Cables*

Freq. MHz	Attenuation dB/100m @ 20°C	NEXT dB	PSNEXT dB	RL dB	ELFEXT dB	PSELFEXT dB
1	1.9	87.6	82.6	28.0	85.0	80.0
4	3.5	79.2	74.2	30.0	73.0	68.0
10	5.6	73.3	68.3	29.0	65.0	60.2
20	8.4	69.1	63.8	29.0	59.0	54.0
100	18.9	58.0	53.0	25.1	45.0	40.1
150	24.0	55.2	50.7	23.8	41.8	36.9
200	26.1	53.0	48.0	22.8	39.0	33.8
250	30.0	52.6	47.6	22.0	37.8	32.8

*Supplied cables meets Cat. 6 min. transmission requirements as per IEC 61156-5 Ed. 2

ORDERING INFORMATION

Part Number	Description	Standard Length
113-40001104X	Category 6 U/UTP 23 AWG 4 Pair Cable PVC E Series	305 mtr
113-40002104X	Category 6 U/UTP 23 AWG 4 Pair Cable LSOH E Series	305 mtr

X: BK(Black), BL(Blue), GN(Green), GY(Gray), RD(Red), WH(White), YL(Yellow)

PACKING INFORMATION

Part Number	Packing Mode	N.W (kg)	G.W (kg)	Dimension (mm)
113-40001104X	Pulley Box	12.0	13.0	400 x 400 x 220
113-40002104X	Pulley Box	12.3	13.2	400 x 400 x 220