

IP/SIP PoE Wall Mount Speaker

IP Based PA System



DESCRIPTION

The NVS-IP100016SP is an IP/SIP Wall mount Speaker, which can be powered via PoE. It supports common network protocols for easy integration with SIP compatible VOIP system. The speaker can be configured from user friendly browser interface. The speaker comes with features like automatic volume control, fault detection etc. It can be configured for playing scheduled tasks from server.

FEATURES

- ◉ Employs an industrial-grade, fast dual-core (ARM+DSP) CPU for increased processing capability
- ◉ Features crystal-clear voice paging with both broadband (G.722) and narrowband (G.711a/u) encoding options
- ◉ Supports receiving paging from SIP phones through 10 dedicated multicast addresses
- ◉ Offers a multicast scalability feature and efficiently saving SIP account resources
- ◉ Fully compliant with standard SIP protocols for seamless integration with top SIP PBX systems like Asterisk, Cisco, and Yeastar
- ◉ Facilitates background music, emergency paging and alarm signals from the NORDEN management system
- ◉ Features dynamic volume control that automatically adjusts based on ambient noise
- ◉ Offers flexible deployment with PoE or PoE+ Interface support
- ◉ Equipped with online upgrading capabilities and remote management for continuous system improvement

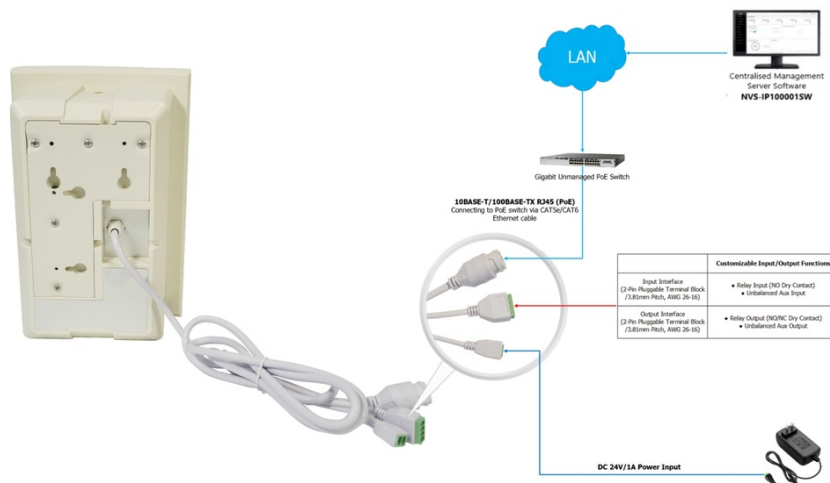
Specifications	
Model	NVS-IP100016SP
Power Supply	DC 24V/1A, PoE (IEEE802.3af), PoE+ (IEEE802.3at)
Standby Power Consumption	≤3W
Rated Power Output	20W (at DC 24V/1A powered)
	15W (at PoE powered)
	20W (at PoE + powered)
Audio Codec	G.711A-law, G.711μ-law, G.722
Sensitivity (1W, 1m)	88dB±3dB
Maximum SPL (1m)	90dB±3dB

NVS-IP100016SP

IP/SIP PoE Wall Mount Speaker

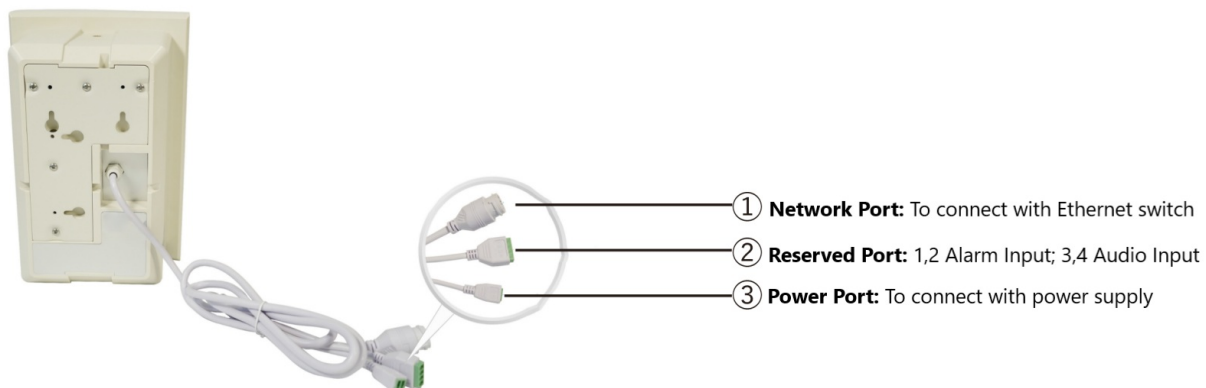
Signal to Noise ratio	≥80dB
Audio Sampling & Bit Rate	8kHz~44.1kHz, 16bit, 8kbps~320kbps
Frequency Response	100Hz~18kHz
Network Interface	10BASE-T/100BASE-TX RJ45
Network Protocol	SIP (RFC3261),FTP,HTTP,TCP/IP,UDP,ARP,ICMP,IGMP
Configuration Method	Web Interface or DevConfig Tool
Mounting Method	Wall Mounted
Installation Environment	Dry Indoor Locations Only
Operating Temperature	-20°C~+50°C (4°F~122°F)
Operating Humidity	10% ~ 90% RH (Non-Condensing)
Casing Material	UL94 V0 rated ABS Resin (Thickened/Flame Retardant)
Grill Material	Surface Spraying
Grill Surface Treatment	Metal Mesh Plate
Colour	Off White
Product Dimensions	292x193x151.5 mm
Product Weight	2.4 Kg
Packaging	Carton Box
Packed Dimensions	330x240x200 mm
Packed Weight	3.8 Kg

CONNECTION DIAGRAM



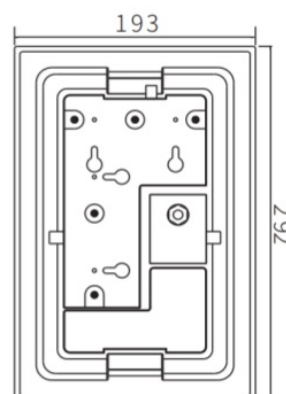
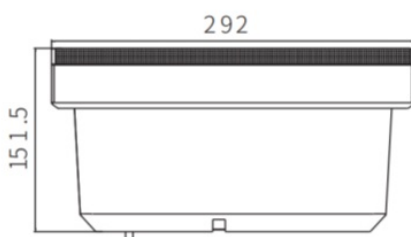
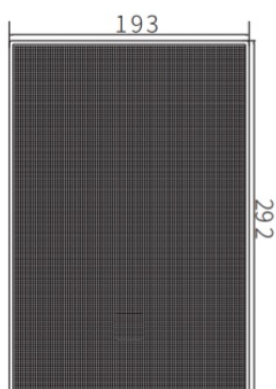
IP/SIP PoE Wall Mount Speaker

Input Connection



DIMENSION

Unit: mm



ORDERING INFORMATION

Part Number	Description	Standard Quantity
NVS-IP100016SP	IP/SIP POE Wall Mount Speaker	01

ACCESSORIES INFORMATION

Description	Standard Quantity
2 Pin Pluggable Terminal Block Connector (3.81mm Pitch, AWG 26 16)	01
4 Pin Pluggable Terminal Block Connector (3.81mm Pitch, AWG 26 16)	01
Waterproof Joint	01
Quick Installation Guide	01
Quality Certificate & Warranty Card	01
Wall Mounting Bracket	01

NVS-IP100016SP



IP/SIP PoE Wall Mount Speaker