

OPGW CABLE ACCESSORIES

Optical Fibre Ground Wire is an instrument used for communication and surge protection in transmission lines. ADSS Accessories include Tension Assembly (Clamp), Suspension Assembly (Clamp), Vibration Damper, Down Lead Clamp, Parallel Glove Clamp (PG Clamp)Optical, and Outdoor Splicing Box (Closure).

OPGW CABLE SUSPENSION ASSEMBLY:

Assembly with reinforced suspension clamp and neoprene inner covering, especially designed for OPGW cables. Includes grounding clamps for tower connection.

TECHNICAL SPEC

AL layer	53.0%
Breaking Load	70 KN without Suspension Clamp
Short Circuit Current	13 KA, 0.3 S
Material	Stainless Steel
Weight	2.5 Kg



ORDERING INFORMATION

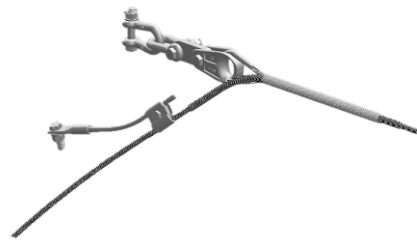
Part Number	Description
OPGW-A1S-48	OPGW Cable Suspension Assembly - 48 Core

OPGW CABLE DEAD END TENSION ASSEMBLY:

Tension assemblies for suspension towers: splicing tension assembly, for towers with joint boxes. The assembly components can be provided with customized features in accordance with Client requirements.

TECHNICAL SPEC

Breaking Load	70 KN
Minimum Failing Load at Dead end	95% of UTS of Conductor
Short Circuit Current	13 KA, 0.3 S
Material	Stainless Steel
Weight	15.6 Kg



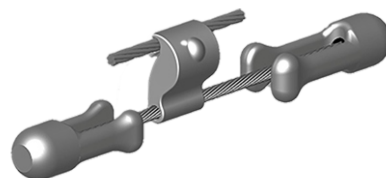
ORDERING INFORMATION

Part Number	Description
OPGW-A1D-48	OPGW Cable Dead End Tension Assembly - 48 Core

OPGW CABLE ACCESSORIES

OPGW CABLE VIBRATION DAMPER:

Install on the conductor and earth wire to decrease the wind vibration, protect the conductor, and earth wire, and fitting, prolong the system's life.

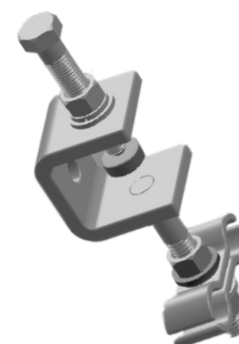


ORDERING INFORMATION

Part Number	Description
OPGW-A1V-48	OPGW Cable Vibration Damper - 48 Core

OPGW CABLE DOWN LEAD CLAMP:

A downlead clamp is used for fiber optical cable terminal and following-tower area, fix the fiber optic cable on the pole downleading from pole and tower.



TECHNICAL SPEC

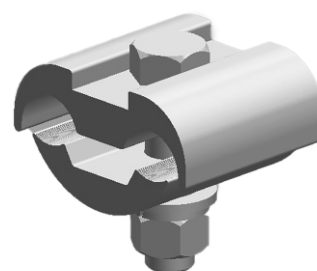
Tightening torque (M12)	20 Nm
Min Average Thickness of Zinc Coating	110µm

ORDERING INFORMATION

Part Number	Description
OPGW- A1L-48	OPGW Cable Down Lead Clamp - 48 Core

OPGW CABLE PARALLEL GROOVE CLAMP:

Parallel groove clamp (PG Clamp) is designed to connect two conductors in parallel and especially used to hold transmission conductors in parallel in transmission lines.



TECHNICAL SPEC

Tightening torque	45Nm
-------------------	------

ORDERING INFORMATION

Part Number	Description
OPGW-A1H-48	OPGW Cable Vibration Damper - 48 Core

OPGW JOINT ENCLOSURE IP67:

Suitable for the end of cable. Make the cable connect the tail optical fiber, also protect the splice.



TECHNICAL SPEC

Joint Box Material	Stainless Steel
Joint Box Cover	Stainless Steel
Bracket	Galvanized Steel
IP Rating	IP 67

ORDERING INFORMATION

Part Number	Description
OPGW-A1J-96	96 Core OPGW Joint Enclosure IP67